



## CREW BIOS

**John Kaywood (Director/Choreographer)** has been involved in the world of theatre since 2009, starting in a high school (Sullivan South High School) production of *Aladdin*. Since then John has done most theatrical jobs possible in a lot of different locations. These positions include Lighting Designer, Assistant Stage Manager, Stage Manager, Assistant Director, Actor, Director, House Manager, Dancer, and now Executive Director. He has worked in over 115 productions including two of the nation's outdoor dramas (*Horn in the West* and *Trail of the Lonesome Pine*) and served as a Venue Director for the New York City International Fringe Festival and Logistics Stage Manager for The Fresh Fruit Festival in New York City, both in 2015. Hailing from Kingsport, Tennessee, Kingsport Theatre Guild means so much to him in his heart. He has also worked at several theaters in the region such as: Theatre Bristol, Jonesborough Repertory Theatre, Johnson City Community Theatre, and Two Pence Productions.

**Caitlyn Morelock (Director/Stage Manager)** has spent many years in the theatre, both on stage and behind the curtain. She has recently directed *A Charlie Brown Christmas*, *We Will Rock You* and *Noises Off* at Kingsport Theatre Guild. She has also recently worked as stage manager and assistant director for a variety of shows, including *Bright Star*, *Cabaret*, *White Christmas*, *RENT*, *Little Shop of Horrors*, *Boeing*, *Boeing* and *A Christmas Cabaret*. She has a great passion for the theatre and brings her enthusiasm to every show in which she is involved.

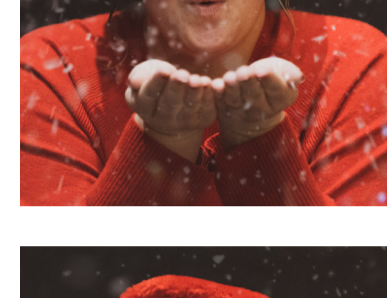
**Kyle Jackson (Music Director/Ensemble)** is a singer, songwriter, pianist, and author who is excited to be music directing his fifth show at KTG, and to get to sing a little bit in this one! He previously music directed *Bonnie and Clyde*, *Bright Star*, *A Charlie Brown Christmas*, and *We Will Rock You* at KTG and numerous other productions elsewhere. He has appeared on stage at KTG and other community theaters in many productions. Kyle is thrilled to be working with this cast, crew, and band to bring this great show to the stage.

**Josh Henderson (Sound Tech)** is a former tech director with over 10 years of experience in the industry. This is his third show with KTG, and he is thrilled to be a part of this production with his spouse Dan. Throughout his career, he has worked on a diverse array of projects, bringing a keen ear and technical expertise to each performance. He is passionate about creating immersive soundscapes that enhance the storytelling on stage. Outside of the theatre, he enjoys video games, electronics, and spending time with friends. He looks forward to contributing to the magic of live theatre with this talented team.

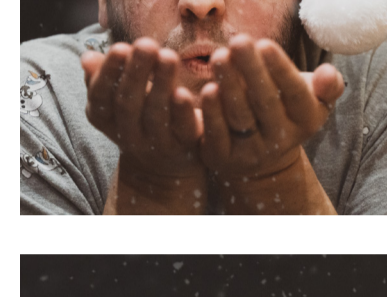
## CAST BIOS



**Brooke Bennett (Ensemble)** is excited to welcome everyone to this wonderful show. She has been in multiple productions at KTG, some of her favorite being *The Rocky Horror Show* as Riff Raff, *Cabaret* as Rosie, *Little Shop of Horrors* as a Street Urchin, and in the ensemble for *White Christmas*. She gives a special thanks to her parents for their never ending support and love, and to her family and friends that always show up. Happy Holidays!



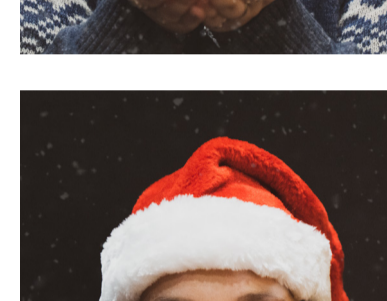
**Makenna Bishop (Ensemble)** has performed for local audiences since childhood. She is so grateful for the opportunity to sing, dance, and have a great time with her husband and closest friends. Some of Makenna's favorite roles include Bonnie Parker in *Bonnie and Clyde*, Belle in *Beauty and the Beast*, Cinderella in *Into the Woods*, and Alice Murphy in *Bright Star*. She would like to thank her family for their constant love and support. Enjoy the show!



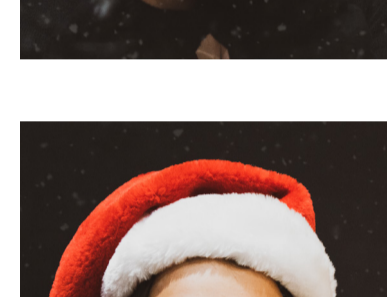
**Tyler Bishop (Ensemble/Choreographer)** is thrilled to take the Renaissance Center stage once again with all his favorite people. He fell in love with acting years ago and since then has performed in multiple productions across the Tri-Cities. Some of his favorite roles include Jimmy Ray Dobbs (*Bright Star*), Oscar (*The Odd Couple*), and Clyde Barrow (*Bonnie and Clyde*). He would like to thank God for everything he's done for him and his family for their unwavering support.



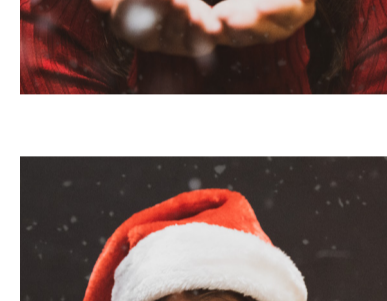
**Kami Eaton (Ensemble)** is in her first show with the Kingsport Theatre Guild and is exhilarated to return to the stage after a decades long break. Inspired by her kids, Lionel and Emmylou, and their own courage to face new creative challenges, she is excited to share her love of performing in this new endeavor. She is grateful to the show's directors for giving her this opportunity. She extends huge thanks to her husband, James, for covering for her before the boss(es) noticed she was gone. Special gratitude to Bear and Noodle Noodle Apple Strudel, the best wiener dogs in the biz.



**Dan Henderson (Ensemble)** is excited and honored to be back at KTG after over a decade away. Starting at the age of eight, they spent many years honing their skills as an actor, singer, playwright, director, and theatre technician in various theaters across the Tri-Cities and beyond. Most notably, they are thrilled to be on stage once again while their spouse, Josh, is in the sound booth.



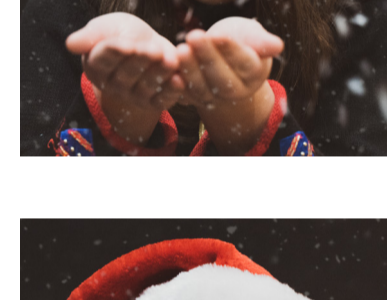
**Blake Kimbler (Ensemble)** is SUPER SUPER SUPER SUPER SUPER SUPER excited for *Broadway Cabaret*, she loves to sing and act at KTG and is happy to act in the last show of the season. Her favorite previous credits at KTG are *A Charlie Brown Christmas*, *Bonnie and Clyde*, *James and the Giant Peach*, and *67 Cinderellas*. She would adore to thank her cast mates, directors, and friends for all the love, support, and encouragement.



**Emma Kimbler (Ensemble)** is very excited to be a part of her first theatre performance in five years. She last played Belinda Cratchit in *Scrooge! the Musical* and Donkey in *Shrek the Musical Jr*. Her dream role is Tracy Turnblad from the musical *Hairspray*.



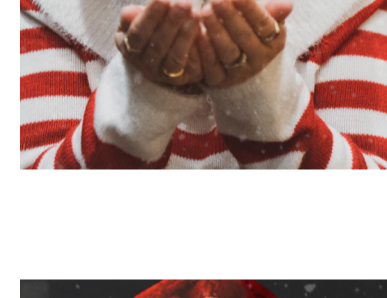
**Blake King (Ensemble)** is excited to make his debut at KTG. Currently a graduate student at ETSU studying occupational therapy, his passion for theatre was inspired by his late grandmother, Vicki Pointer. He thanks his wife, Emma, for encouraging him to step out of his comfort zone, along with his family and friends for their support.



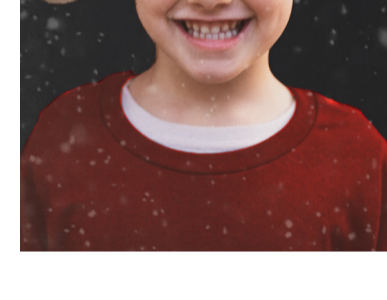
**Emma King (Ensemble)** is so excited to be in her third production with KTG! You may have seen her as the Witch in *Into the Woods* or in the ensemble of *Bonnie and Clyde*. She has so much love for this cast of incredible people. She is especially thankful to be in this show with her husband and forever duet partner, Blake!



**Hannah Love (Ensemble)** is so happy to be a part of this *Broadway Cabaret* with all these amazing people. She is a graduate of ETSU's Theatre Program. Her most recent roles include Blanche in *Bonnie and Clyde*, Baker's Wife in *Into The Woods*, Usherette in *The Rocky Horror Show*, and Patty in *School of Rock*. She wants to thank KTG for giving her this opportunity, and Tanner for all his love and support.



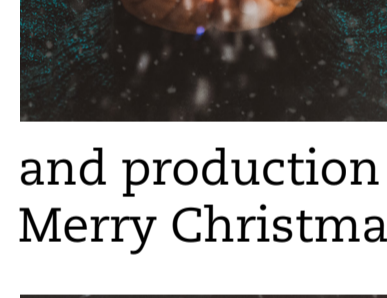
**Tabatha Oliver (Ensemble)** is so excited to be performing some of her favorite songs with *Broadway Cabaret*! She has been performing at local theaters throughout the region since 2015. Some of her favorite roles have been Amazing Mayzie (*Seussical*), Sister Mary Martin of Tours (*Sister Act*), Hannah (*Newsical*), as well as Janet and Columbia in *The Rocky Horror Show*. She loves getting to bring stories to life through song and dance and enjoys it even more when she gets to do so alongside her talented husband, Andrew Oliver. Willkommen and enjoy the show!



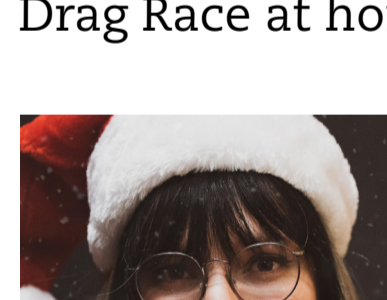
**Georgia Phillips (Ensemble)** is excited to be in her third show at KTG. Her first performance was in the show *White Christmas*, and she is thrilled to be back on stage with her friends to help sing the title song. She is in first grade, loves softball, and wants to pet every dog that she sees. She wants to wish everyone a Merry Christmas!



**Maxine Poole (Ensemble)** is happy to be a part of this delightful show! She studied at Emory & Henry College, where she received a BFA in Musical Theatre. Some of her favorite roles include Baker's Wife (*Into the Woods*), Maureen (*RENT*), Janet (*The Rocky Horror Show*), Margo (*Bright Star*), Lulu (*Cabaret*), and Blanche (*A Streetcar Named Desire*). More of her theatrical work can be found at maxinepoole.wixsite.com/2024. She is thrilled she always to be working alongside this talented cast and crew. She would like to thank her family and friends for their constant love and support, and her wonderful girlfriend Mack, for her encouragement and love.



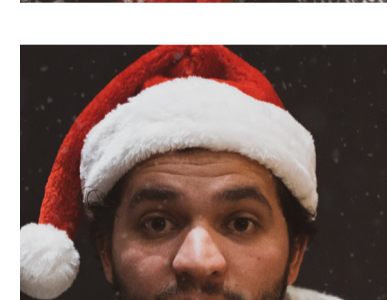
**Jake Price (Ensemble)** is so excited to be performing with Kingsport Theatre Guild again! He has been performing since he was 5-years-old and since has performed with theaters across the area and went on to study acting. Some of his favorite past roles include Clarence Oddbody (*It's a Wonderful Life*), Galileo (*We Will Rock You*), Ed Boone (*The Curious Incident of the Dog in the Night-time*), Richard Hannay (*The 39 Steps*), and Lysander (*A Midsummer's Night Dream*). He would first like to thank God for His continuing blessings in his life, the incredible cast, crew, and production team, and his family and friends for all of their love and support. Merry Christmas, Happy Holidays and enjoy the show!



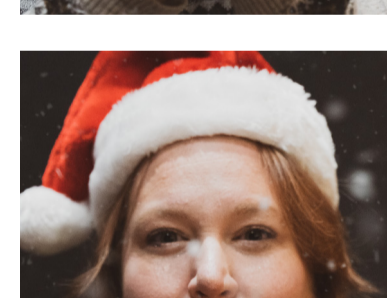
**Drew Richardson (Ensemble)** is showing that *Broadway Cabaret* for you all, as your lovely Emcee. They have always loved the arts and are definitely known as creative, and with their recent appearance in KTG's run of *The Rocky Horror Show* they are excited to continue with the guild. They have a special love for makeup artistry, both beauty and special effects, and have been at it for 7+ years, working with school productions and online contests. When they aren't working or finding out their latest new hobby, you can find them watching RuPaul's Drag Race at home or at a local rave!



**Sage Summey (Ensemble)** has been doing theatre for fourteen years across many stages, but it is her first time performing with KTG and she is incredibly excited to be a part of this show. Outside of theatre she is an avid reader, an artist, and has recently taken up sewing and up-cycling clothing.



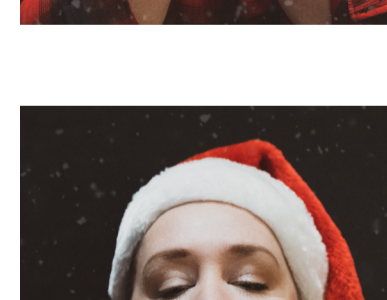
**David Taylor (Ensemble)** discovered his love of musical theatre 10 years ago performing in *Into the Woods*. Since then, he has enjoyed performing in many musicals with KTG as well as his church choir. He thanks his family for their continued love and support.



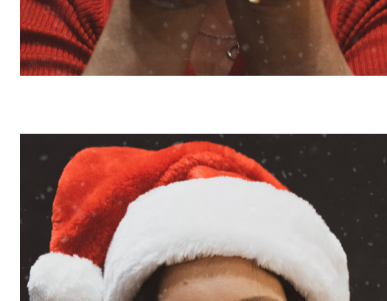
**Carlos Candelas Torres (Ensemble)** is in his second show with KTG. He is excited to be part of this show. It has been a great year and he is excited to close it with this amazing cast. And as always he would like to apologize to his co-workers for singing in the office.



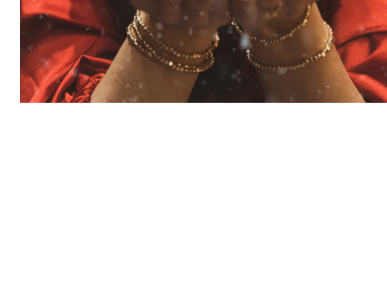
**Emily Westbrooks (Ensemble)** is so excited to join the cast of *Broadway Cabaret: Broadway Through Time*. After spending the last decade in New York enjoying Broadway shows from the audience, she's delighted to step on stage with Kingsport Theatre Guild for the first time to celebrate their history. She'd like to thank her family for their unconditional love and support and the whole KTG crew for being so welcoming. For Sami and Gavin.



**Jeremy White (Ensemble)** is excited to be joining this cast for a cabaret through *Broadway* history. His previous roles include Buck Barrow (*Bonnie & Clyde*), Daddy Murphy (*Bright Star*), Herr Schultz (*Cabaret*), Melchior (*Dollywood's O Holy Night*), Mr. Grey, et. Al. (*RENT*), and Rev. Paris (*The Crucible*). He would like to thank his family and friends for their love and encouragement in all things, but especially in the pursuit of his dreams and passions. He is excited to share this experience with you and hopes that you enjoy this walk down the history of The Great White Way.



**Jessica White (Ensemble)** has been performing since childhood, beginning with musical theatre, choral and acapella group performances. Once in college she added to that ballroom dancing and the circus arts. After college, she moved to Boston where she began a 12-year love affair with burlesque and incorporated that in with her singing and circus. Since moving to Tennessee, she has been focusing primarily on singing vintage jazz and is so excited to be a part of her 5th show with KTG!!



**Holly Yokley (Ensemble)** is absolutely thrilled to be back on stage with this incredibly talented cast, crew, and live band at Kingsport Theatre Guild! Some of her favorite roles include Lucy (*A Charlie Brown Christmas*), Eleanore (*Bonnie and Clyde*), Mrs. Meers (*Thoroughly Modern Millie*), Dolly (*Annie Get Your Gun*), and Chip (*Beauty and the Beast*). She would like to thank her family and friends immensely for all their love and support in doing what she loves.

## MUSICIAN BIOS

**Howard Bloom (Bass)** has performed rock-n-roll concert tours for five years. Three years were spent performing with the Mitch Ryder band. Howard, originally from New York, then began touring with his home-town band called Network. Their first tour was a thirty-city tour as an opening act for Hall and Oates. Network recorded two albums, the first being co-produced by Barry Gibb of the Bee Gees. Taking a break from touring then found him joining the space program at Kennedy Space Center in Florida as a manager for the following twelve years. He now calls northeast Tennessee home and is playing with a fifteen piece big band called Tri-Cities Jazz Orchestra in addition to two other bands and performing with local stage shows.

**Tucker King (Drums/Percussion)** is originally from Kingston, TN and is the youngest of 3. He began his love for music when he started playing trumpet in his middle school band. That love for music grew when he taught himself how to play guitar, drums, and the ukulele in 2018. His hobbies include playing and writing music. On top of that, he also is a youth leader at his church in Elizabethton where he loves on kids and families. Though he plays a variety of instruments his instrument of choice is drums.

**Reese Ledford (Guitar)** has the pleasure of playing guitar in this show. He has grown up around music. Starting at the age of 6, he played his first guitar. And from then on he joined his church's worship team from the time he was 11 to... about last week! Being able to join a group of people and make an awesome sound is one of the best feelings out there and he feels so blessed to be part of this show. Hope you enjoy!

**Brett McCluskey (Keyboard II)** is a versatile musician, playing piano and drums. He enjoys sharing his talents with theaters and venues in the region and is excited to be part of Kingsport's talented theatre guild family.

**Andrew Oliver (Reeds)** is thrilled to be performing again with Kingsport Theatre Guild. This multi-instrumentalist performs throughout the area with groups such as Demon Waffle, Bad Cats Brass Band, the Tri-Cities Jazz Orchestra, and anyone that needs a spicy woodwind. Andrew was last seen on the KTG stage during their production of *The Rocky Horror Show*. He loves the theatre, especially when he gets to perform alongside his amazing wife, Tabatha Oliver.



# Sponsors



TENNESSEE  
**ARTS**  
COMMISSION

Cultivate. Create. Participate.



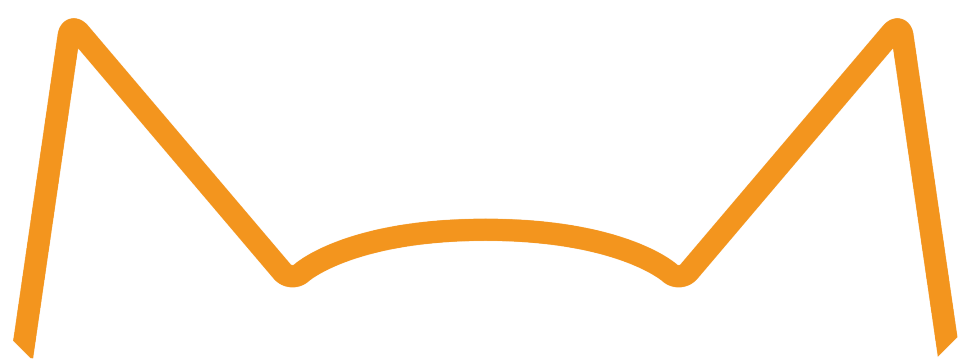
KINGSPORT  
TENNESSEE

SUPPORT THE ARTS  
WITH AN ARTS PLATE



[tnspecialtyplates.org](http://tnspecialtyplates.org)

TENNESSEE  
SPECIALTY  
LICENSE PLATES



**CREATIVE CAT**

graphic design, videography, photography

## Board of Directors

**Shane Christian - Interim President**

**Warren Adler - Treasurer**

**Kate Woodworth - Secretary**

**Bryant Christian**

## Staff

**John Kaywood**

Executive Director

**Caitlyn Morelock**

Assistant Executive Director

**Tyler Bishop**

Theatre Assistant

**Christian Coger**

Technical Director

**Brooke Bennett**

Makeup Specialist

**Rebecca Nelson**

Advertising Materialist

**Helen Pennington**

Hair and Wardrobe Management

**Maxine Poole**

Media Specialist

**Sarah Shanks**

Front of House Manager

**Enelisa Sutton**

Movement Coordinator

**Jess White**

Props Mistress

## Get Involved at KTG

The Kingsport Theatre Guild has many ways you can support us other than monetary donations. We need help with set construction, acting, ushering, publicity, concessions, and so much more!

**Website**

[kingsporttheatre.com](http://kingsporttheatre.com)

**Facebook**

@KingsportTheatreGuild

**Email**

[ktg.exec@gmail.com](mailto:ktg.exec@gmail.com)

## Be a Playbill Sponsor

Place an ad or "wish us well" in our playbill!

Playbill Sponsorships as well as Corporate Sponsorships and Partnerships are available!

**Please contact us at**

[ktg.exec@gmail.com](mailto:ktg.exec@gmail.com)

